



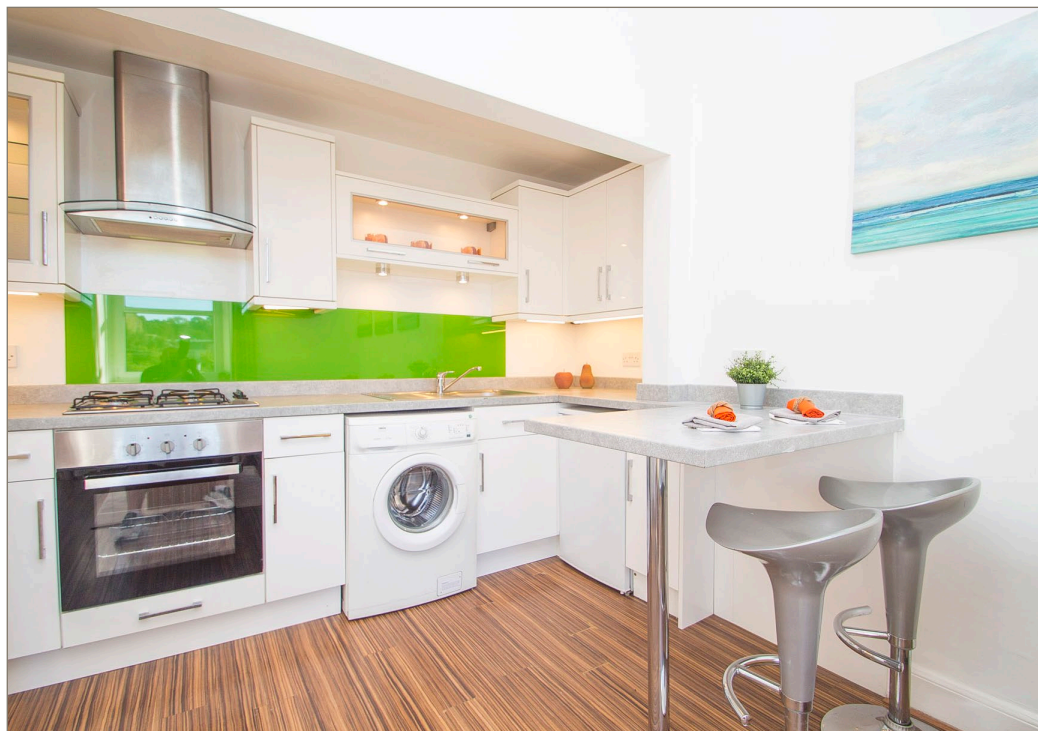
'Superbly presented and bright top (2nd) floor flat forming part of a traditional Victorian built tenement adjacent to Holyrood Park.'

Hallway, front facing lounge with view towards Calton Hill and the city skyline, contemporary style open plan breakfasting kitchen with built in appliances, corner double bedroom with fitted wardrobes and luxurious bathroom with shower above bath. Laminate flooring. Double glazing. Gas central heating. Secure entry phone system. Shared rear garden. Ideal for first time buyer or buy to let investment.

Milton Street lies approximately 1.5 miles East of Princes Street and is therefore ideally placed for city centre living with a regular bus service available a few hundred yards away. Within the immediate vicinity there is a plethora of amenities to meet everyday needs including a Sainsbury's supermarket, Meadowbank Retail park which houses a number of major retailers and Meadowbank Sports Centre. A short distance away is the Omni Centre with multi-screen cinema complex and Nuffield Health club whilst St James Quarter has a wealth of leading retailers, bars and restaurants. Adjacent Holyrood Park provides 640 acres of dramatic parkland within the heart of the capital as ideal for walking, running and cycling.

Energy Performance Rating

D







TOP FLOOR

